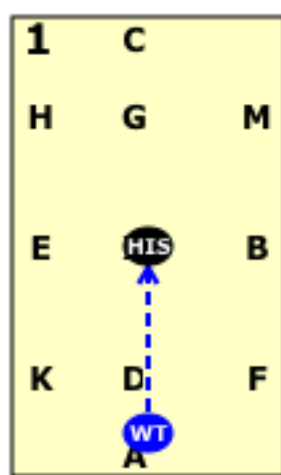
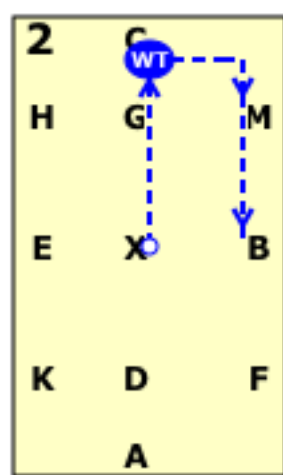




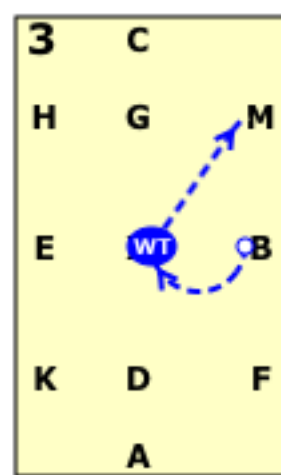
LONG DROVE DC ELEMENTARY 1  
[20x40, viewed from A end]



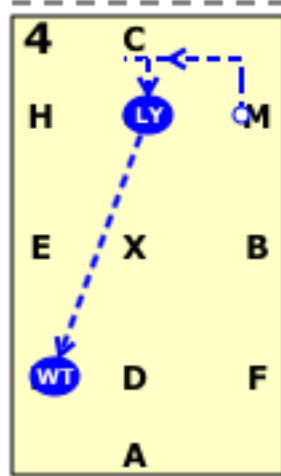
A: Enter in working trot  
X: Halt immobility salute  
proceed in working trot



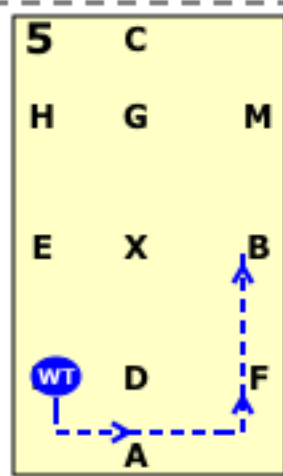
C: Turn right  
CMB: Working trot



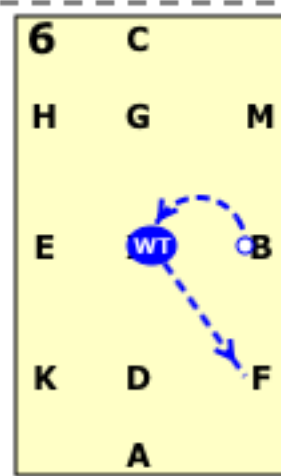
BX: Half 10m circle right  
to X  
XM: Diagonal return to  
the track at M



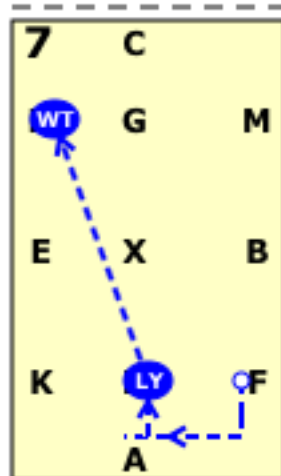
C: Turn left  
G: Leg yield to between  
E and K  
K: Working trot



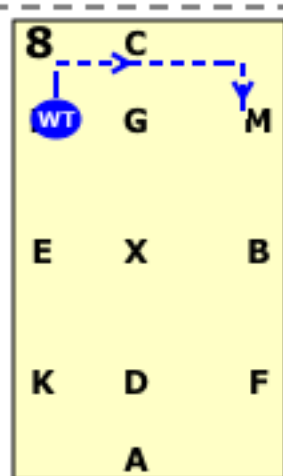
KAFB: Working trot



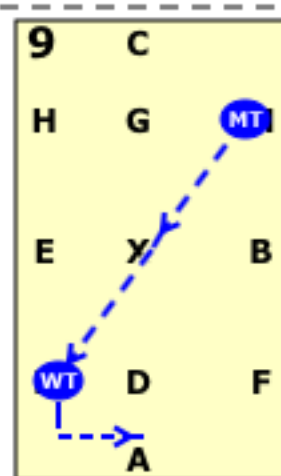
BX: Half circle left from B  
to X  
XF: Diagonal return to  
the track at F



A: Turn right  
D: Leg field to between E  
and H  
H: Working trot



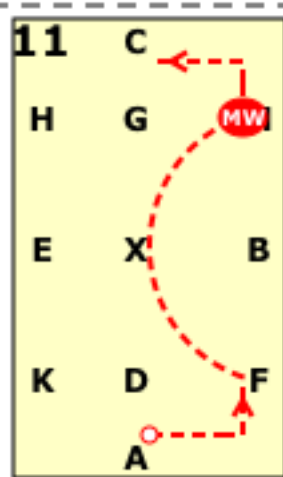
HCM: Working trot



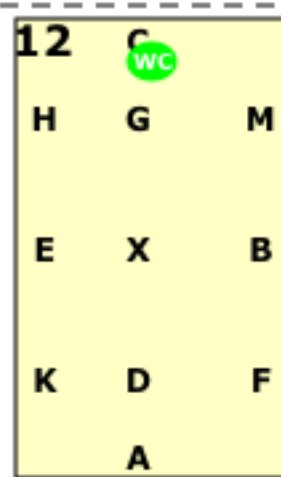
MXK: Medium trot  
KA: Working trot



A: Transition to medium  
walk



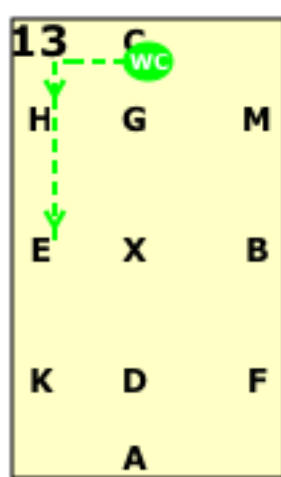
FM: 10m loop in free  
walk on a long rein  
MC: Medium walk



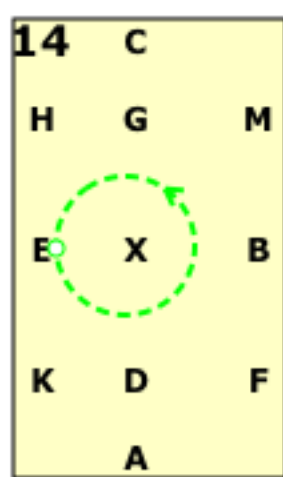
C: Transition to working  
canter left



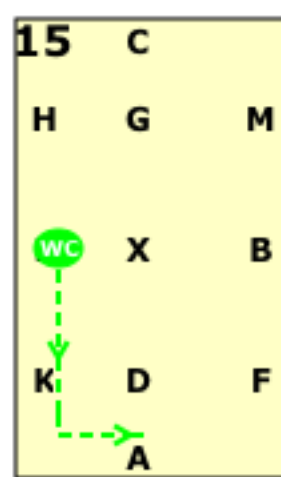
LONG DROVE DC ELEMENTARY 1



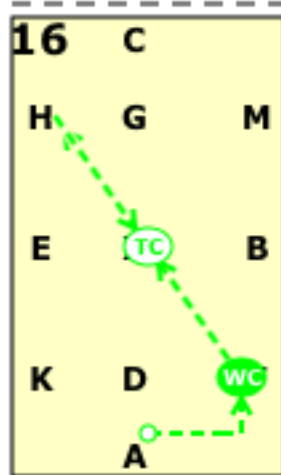
CHE: Working canter



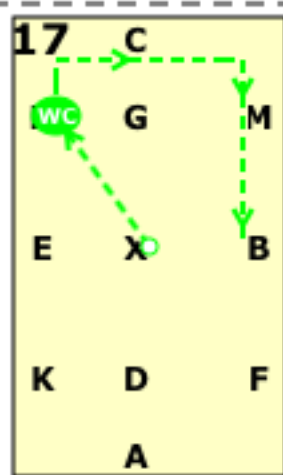
E: Circle left 15 metres



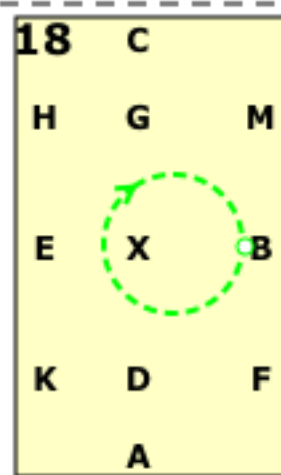
EKA: Working canter



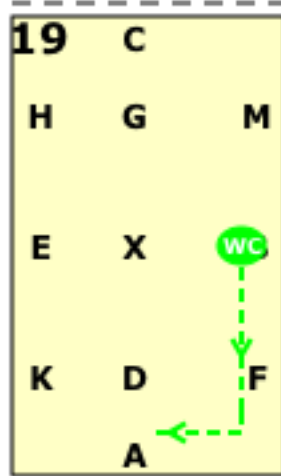
FXH: Change the rein  
X: Change of leg through  
trot



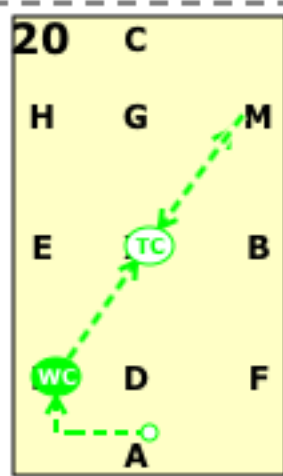
HCMB: Working canter



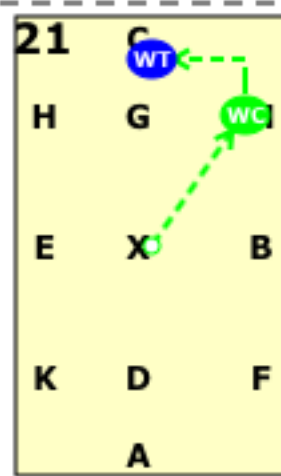
B: Circle right 15 metres



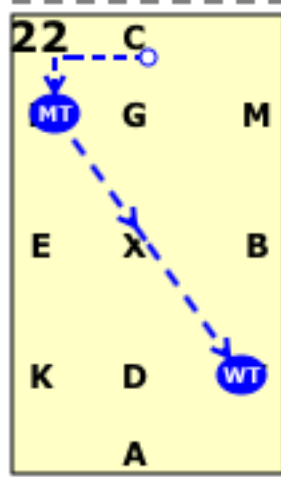
BFA: Working canter



KXM: Change the rein  
X: Change of leg through  
trot



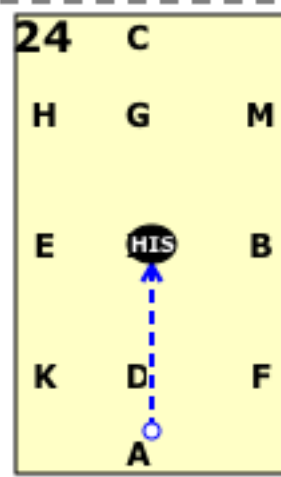
M: Working canter  
C: Working trot



HXF: Change the rein in  
medium trot  
F: Working trot



A: Turn down the centre  
line



X: Halt immobility salute